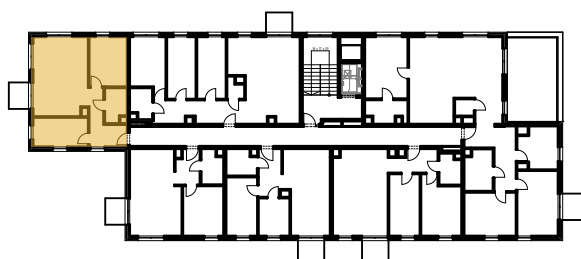
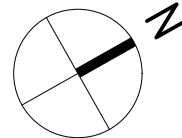


| MIESZKANIE 2P+AK | NR B/5/52            |
|------------------|----------------------|
| Korytarz         | 4,87                 |
| Łazienka         | 4,30                 |
| Pokój            | 11,91                |
| Salon z aneksem  | 24,97                |
|                  | 46,05 m <sup>2</sup> |

ŚCIANY DZIAŁOWE  
ŚCIANY NOŚNE



PIĘTRO +5

