
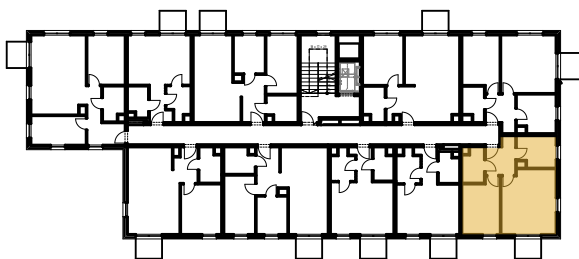
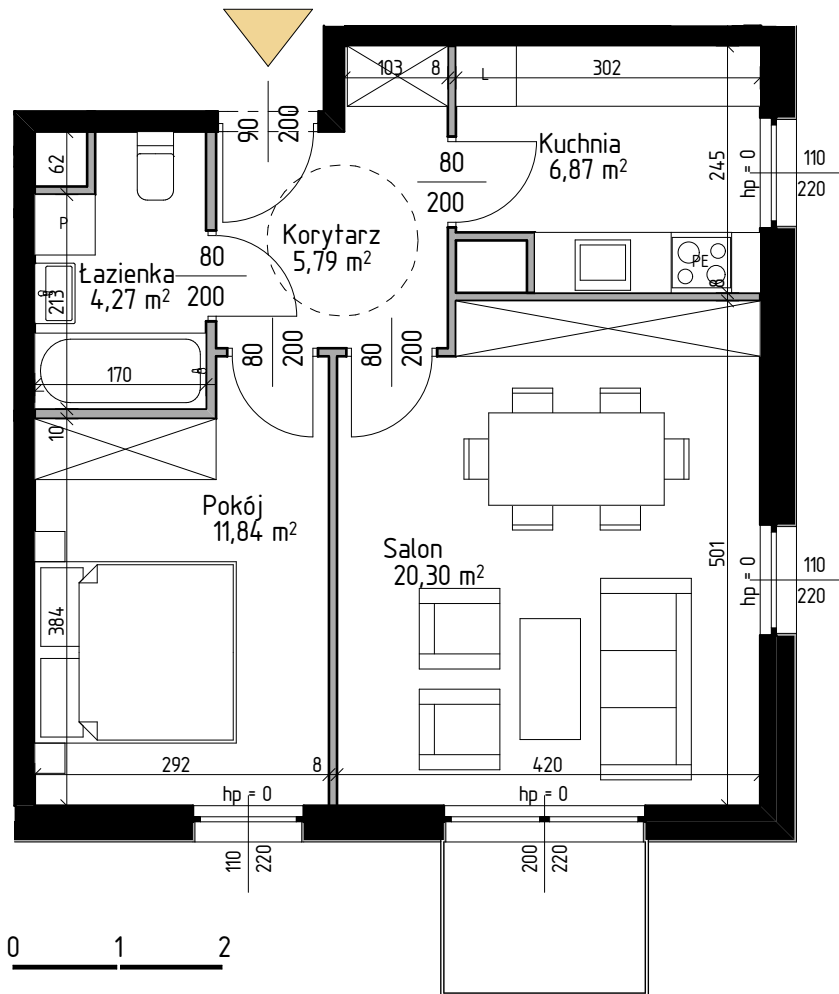
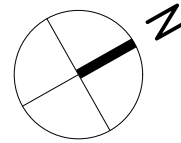




MIESZKANIE 2P+K	NR B/2/29
Korytarz	5,79
Kuchnia	6,87
Łazienka	4,27
Pokój	11,84
Salon	20,30
	49,07 m <sup>2</sup>

ŚCIANY DZIAŁOWE   
 ŚCIANY NOŚNE 



PIĘTRO +2

