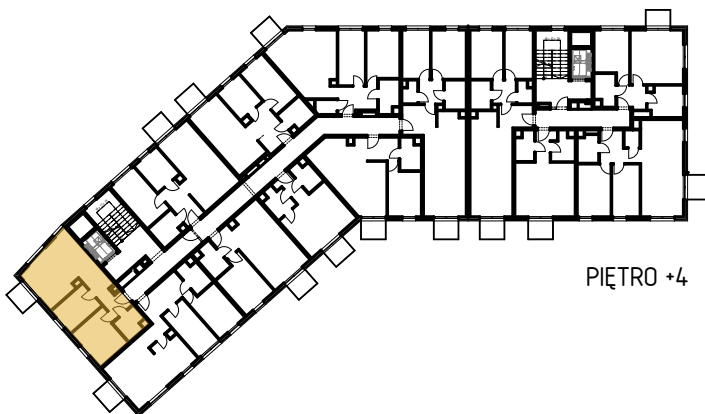
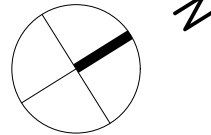


| MIESZKANIE 3P+AK | NR A/4/40 |
|------------------|----------------------|
| Korytarz | 6,99 |
| Łazienka | 4,08 |
| Pokój | 11,53 |
| Pokój | 8,23 |
| Salon z aneksem | 21,34 |
| | 52,17 m ² |

ŚCIANY DZIAŁOWE 
 ŚCIANY NOŚNE 



PIĘTRO +4

